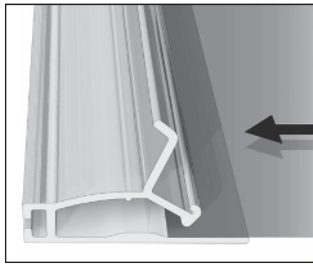


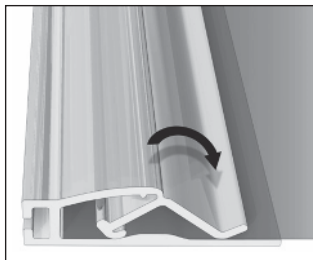
installation instructions

# ALUMINUM SNAPRAIL™



## step 1

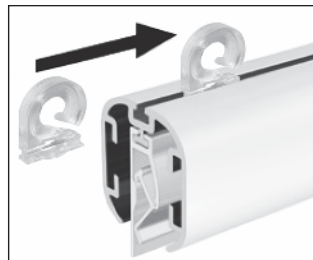
Place the SNAPRAIL™ on a flat surface. Open the hinged “doors” and fully insert the sign stock into the top and bottom pieces of SNAPRAIL™.



## step 2

Close the hinged “doors” to lock the sign place. Start by pressing down in the center and working towards the outside.

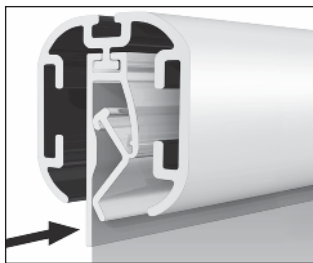
SNAPRAIL™ closes easily only when sign stock is inserted.



## step 4

Insert aluminum banner clips into both ends of the aluminum shroud to create hanging points.

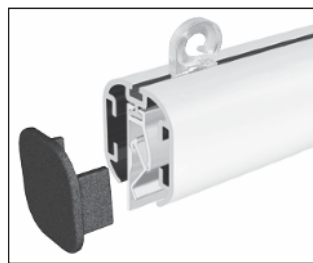
This is only necessary on the top SNAPRAIL™ and shroud.



## step 3

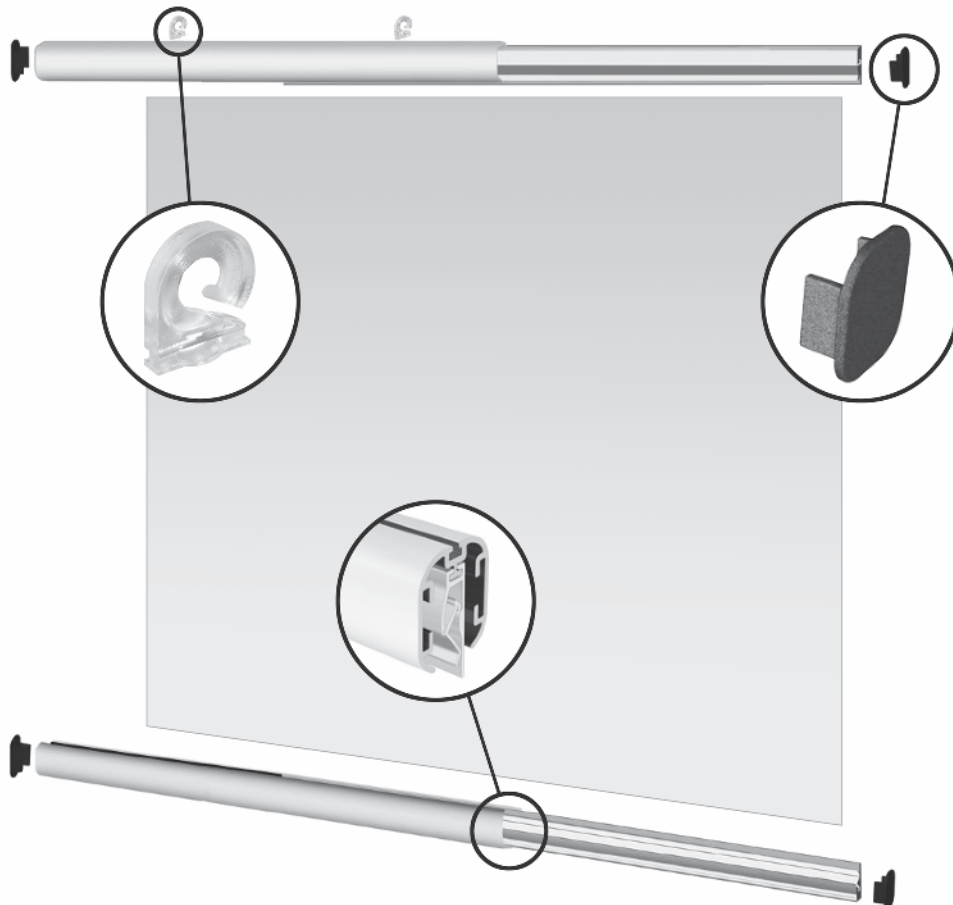
Slide the SNAPRAIL™ and attached sign into the aluminum shroud, fitting the groove in the top of the SNAPRAIL™ over the track inside the shroud.

(as pictured)



## step 5

Insert end caps in the ends of both aluminum shrouds to complete assembly.



Hang your completed sign. The completed unit will employ all of the components pictured and also your choice of hanging hardware.

PATENTED

popco™  
popco-usa.com