

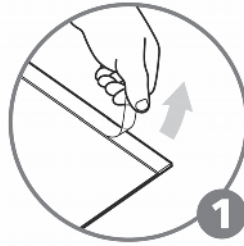
usage instructions

MAGIK FRAME™



A re-usable sign holder that displays signs on any surface without leaving sticky residue behind.

- **no lasting residue**
- **no messy tapes**
- **reusable/repositionable**
- **durable construction**
- **scratch resistant front**



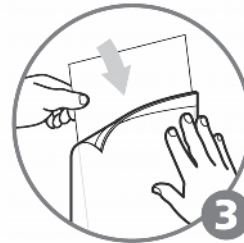
step 1

remove liner from the back of Magic Frame™ strips



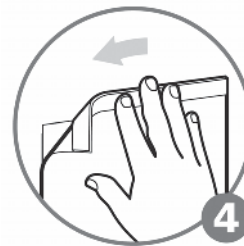
step 2

apply to any smooth surface pressing on the bottom strip first



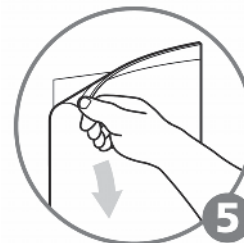
step 3

insert sign behind the frame



step 4

press down on the top strip



step 5

to remove, simply pull off