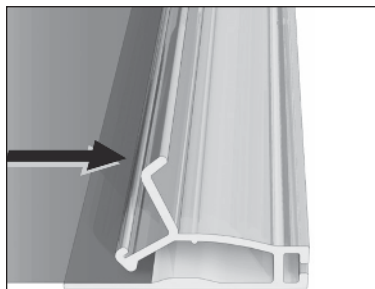
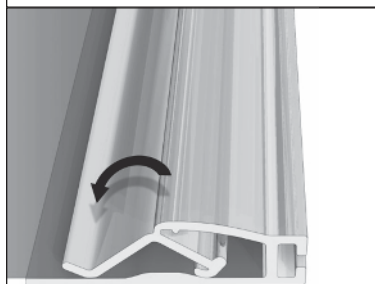


# ALUMINUM SNAPRAIL™ KIT



## step 1

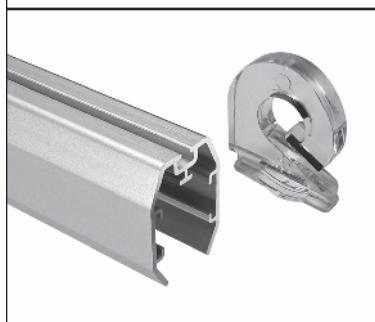
Place the SNAPRAIL™ on a flat surface. Open the hinged “doors” and fully insert the sign stock into the top and bottom pieces of SNAPRAIL™.



## step 2

Close the hinged “doors” to lock the sign in place. Start by pressing down in the center and working towards the outside.

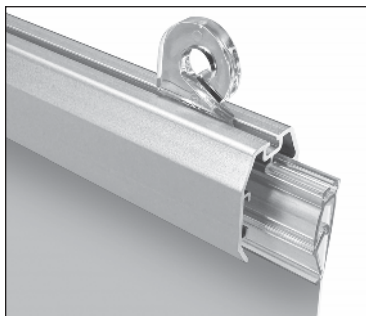
SNAPRAIL™ closes easily only when sign stock is inserted.



## step 3

Insert banner clips into the top track of the aluminum shroud. The banner clips create hanging points on the shroud and must be in place prior to inserting end caps.

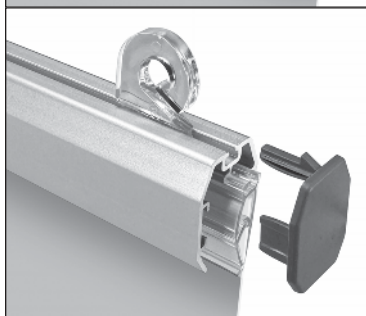
BRC-7 series banner clips are shown here.



## step 4

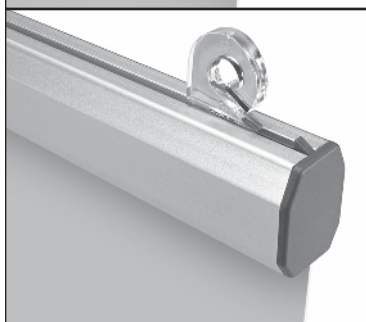
Slide the SNAPRAIL™ with the attached sign into the aluminum shroud, fitting the groove in the top of the SNAPRAIL™ over the track inside the shroud.

(as pictured)



## step 5

With the SNAPRAIL™ and sign fully inserted into the aluminum shroud, and with the banner clips in place, align the end cap tabs with the shroud's top and side grooves and insert. Do this on both ends of the shroud.

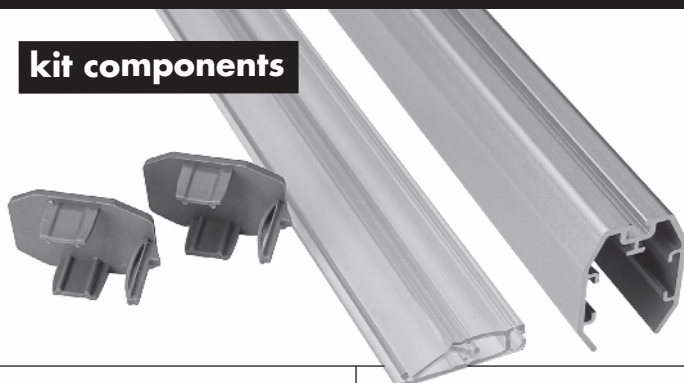


## step 6

With the end caps inserted in the aluminum shroud, you are ready to hang your sign.

Optionally, use a second set of kit components at the bottom of your sign to prevent bowing and curling of the sign.

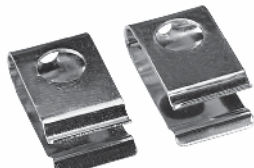
### kit components



### banner clip options sold separately



BRC-7 series banner clips



BRC-3 series banner clips

A completed kit will employ all of the components pictured (left), plus your choice of banner clips and hanging hardware.

